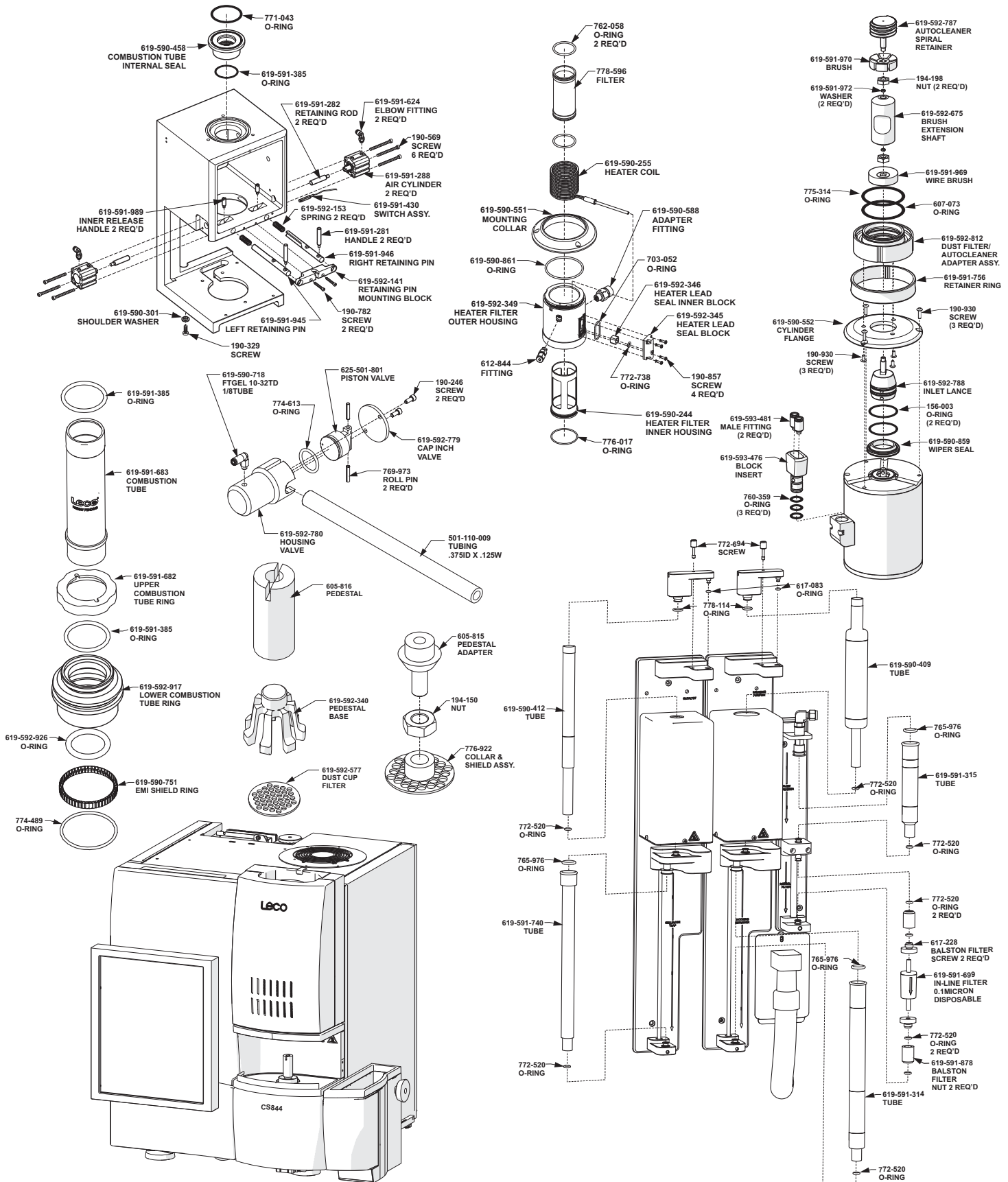


CS844 Consumables & Spare Parts Reference Card

Note: Part numbers and standards' values may change. Consult LECO for the latest information.



See reverse side for contact information

COMBUSTION SUPPLIES

| | |
|-------------|---|
| 528-018 | Ceramic Crucible 1000/box |
| 528-018HP | High Purity Ceramic Crucibles 1000/box |
| 528-050 | Ceramic Crucible 500/box, bags of 50 |
| 619-880 | Ceramic Crucible Cover with Hole, 1000/box |
| 619-880-100 | Ceramic Crucible Cover with Hole, 100/box |
| 619-591-683 | Combustion Tube (Quartz) |
| 778-596 | Dust Filter (SST Filter) |
| 619-591-474 | Lance Cleaning Wire |
| 619-591-970 | Lower Cleaning Brush (Reworked Brush) |
| 762-058 | O-ring, Dust Filter |
| 605-816 | Silicon Nitride Pedestal |
| 619-591-622 | Vacuum Cleaner Filter; Disposable (Round Style) |
| 619-591-454 | Vacuum Cloth Bag Filter (Round Style) |
| 619-591-456 | Vacuum HEPA Filter (Round Style) |
| 782-880 | Filter (Square Style) |
| 782-603 | Vacuum Hose (Square Style) |
| 501-082 | Wire Cleaning Brush |

ACCELERATORS

| | |
|---------|---|
| 502-492 | Copper Accelerator HP (0.44 lb./200 g) |
| 501-263 | Copper Metal Accelerator 1.36 kg (3 lb.) bottle |
| 501-640 | Copper Metal Accelerator 9 kg (20 lb.) container |
| 501-264 | Copper Metal Accelerator, 227 g (0.5 lb.) bottle |
| 502-231 | High Purity Iron Accelerator 454 g (1 lb.) bottle |
| 501-077 | Iron Chip Accelerator 0.9 kg (2 lb.) bottle |
| 763-026 | LECOCEL® 13.6 kg (30 lb.) container |
| 763-266 | LECOCEL® 2.27 kg (5 lb.) bottle |
| 502-297 | LECOCEL® II (30 lb./13.6 kg) |
| 501-008 | LECOCEL® II 2.27 kg (5 lb.) bottle |
| 502-173 | LECOCEL® II HP 750 g (1.7 lb.) bottle |
| 763-263 | LECOCEL® III 2.27 kg (5 lb.) bottle |
| 763-027 | LECOCEL® III 13.6 kg (30 lb.) container |

CATALYSTS AND REAGENTS

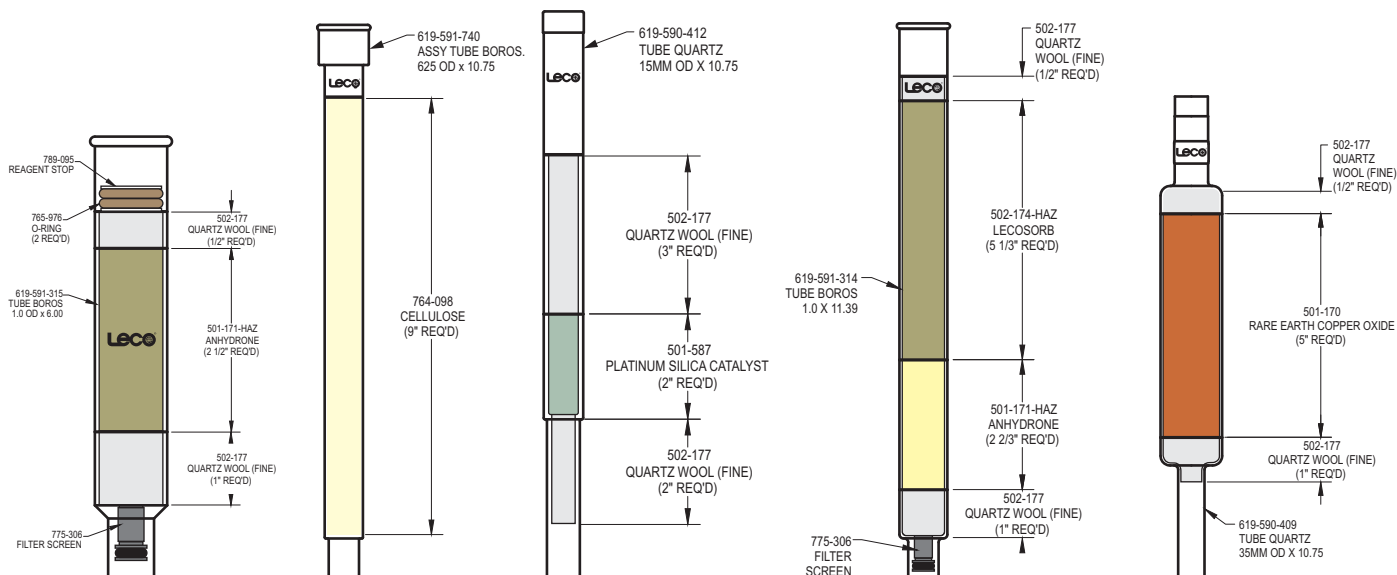
| | |
|-------------|-------------------------------------|
| 501-171-HAZ | Anhydron 454 g (1 lb.) bottle |
| 764-098 | Cellulose 454 g (1 lb.) package |
| 502-174-HAZ | Lecosorb 500 g bottle, 20–30 mesh |
| 502-176-HAZ | Lecosorb 500 g bottle, 8–20 mesh |
| 501-587 | Platinum/Silica 15 g bottle |
| 502-177 | Quartz Wool 50 g package |
| 501-170 | Rare Earth Copper Oxide 50 g bottle |

REAGENT TUBES

| | |
|-------------|---|
| 619-590-412 | Quartz Tube, requires one (1) 778-114 O-ring and one (1) 772-520 O-ring for sealing |
| 619-590-409 | Quartz Tube, requires one (1) 778-114 O-ring and one (1) 772-520 O-ring for sealing |
| 619-591-740 | Glass Tube, requires one (1) 765-976 O-ring and one (1) 772-520 O-ring for sealing |
| 619-591-314 | Glass Tube, requires one (1) 765-976 O-ring and one (1) 772-520 O-ring for sealing |
| 619-591-315 | Glass Tube, requires one (2) 772-520 O-ring and one (1) 765-976 O-ring for sealing |

OPERATION ACCESSORIES

| | |
|-------------|-----------------------------|
| 619-591-699 | Balston Filter |
| 761-929 | Crucible Tongs |
| 619-590-751 | EMI Gasket |
| 625-711-260 | Screen/Doser Removal Tool |
| 775-306 | Secondary Filter, 10 micron |
| 503-032 | Glass Accelerator Scoop |
| 773-579 | Metal Accelerator Scoop |
| 764-078 | One gram Weight |
| 760-138 | Sample Tweezers |
| 501-241 | Vacuum Grease |
| 502-023 | Tube Funnel |
| 762-515 | O-Ring Removal Tool |
| 502-237 | Cleaning Wipes |
| 619-592-597 | Dust Removal Tool |



Please Note: Quartz Tubes are typically utilized for higher temperature applications (i.e. catalyst tubes). Glass reagent/filter tubes are designed for lower temperature applications. Glass tubes should not be used in place of quartz tubes.

NOTE: Part numbers and standards' values may change. Consult LECO for latest information.

United States: 800-292-6141 • Canada: 800-268-0215 • Other Countries: 269-985-5496
 info@leco.com • www.leco.com • ISO-9001:2008 HQ-Q-994 • © 2017 LECO Corporation